



QCast Mirror - QP20  
HDMI Wireless Dongle  
User Manual

# Copyright

© 2020 BenQ Corporation. All rights reserved. No part of this publication may be reproduced, transmitted, transcribed, stored in a retrieval system or translated into any language or computer language, in any form or by any means, electronic, mechanical, magnetic, optical, chemical, manual or otherwise, without the prior written permission of BenQ Corporation.

All other logos, products, or company names mentioned in this document may be the registered trademarks or copyrights of their respective companies, and are used for informational purposes only.

## Disclaimer

BenQ Corporation makes no representations or warranties, either expressed or implied, with respect to the contents hereof and specifically disclaims any warranties, merchantability or fitness for any particular purpose. Further, BenQ Corporation reserves the right to revise this publication and to make changes from time to time in the contents hereof without obligation of BenQ Corporation to notify any person of such revision or changes.

Screen images and icons in this manual are simulated for illustrative purposes only. Actual displays may vary.

BenQ is not responsible for the content of the websites or of similar resources, which are maintained and controlled by third parties, that may be linked from this product. Providing links to those websites or to similar resources does not mean that BenQ makes any warranty or representation to their content by expression or by implication.

Any third party content or service preinstalled in this product is provided "as is". BenQ does not, by expression or by implication, make any warrant to the content or to the services provided by third parties. BenQ does not warrant or guarantee that the content or services provided by third parties are accurate, effective, most up-to-date, legal, or complete. Under no circumstances shall BenQ be liable for the content or services provided by third parties including their negligence.

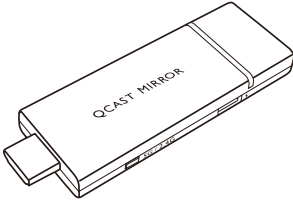
Services provided by third parties may be terminated temporarily or permanently. BenQ does not warrant or guarantee that the content or services provided by third parties are in good condition at any time, and is not liable for the termination of the said content and services.

In addition, BenQ is not involved in any transactions you conduct in the websites or similar resources maintained by third parties. You should contact the content or service providers for any questions, concerns, or disputes.

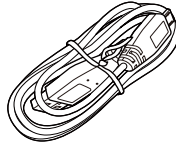
# Table of Contents

Package Contents .....	4
Product Overview .....	4
Operating Instructions.....	5
Connecting the dongle to your projector.....	5
Mirroring the content from your device .....	7
Advanced Settings.....	11
Product Specifications.....	12
System Requirements.....	12
FAQ.....	13

# Package Contents



QCast Mirror  
HDMI wireless dongle

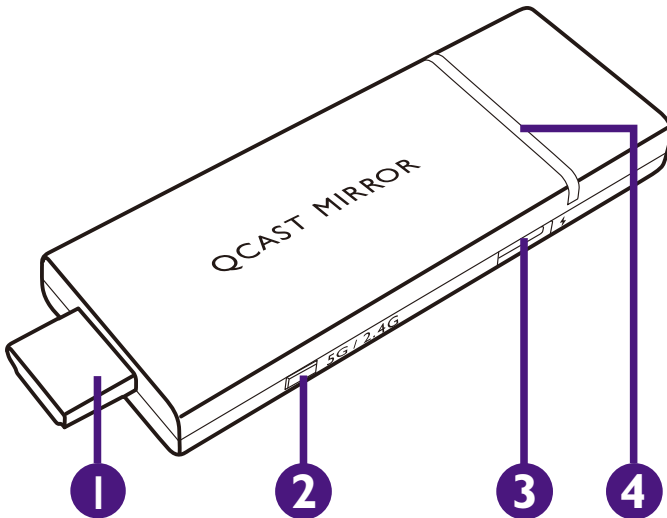


Micro-USB cable



Quick start guide

# Product Overview



- 1. HDMI Connector**  
Connects to the projector.
- 2. 2.4/5G Wi-Fi Switcher**  
Switches the Wi-Fi signal between 5G and 2.4G when pushed, the default setting for the signal is 5G. See [“Advanced Settings” on page 11](#) for details on switching Wi-Fi signals via the **Advanced Settings** menu
- 3. USB Port**  
Connects to the display’s USB port (or a standard adapter head) via the Micro-USB cable to supply the dongle with power.
- 4. LED Indicator**  
Lights up blue when power is supplied.

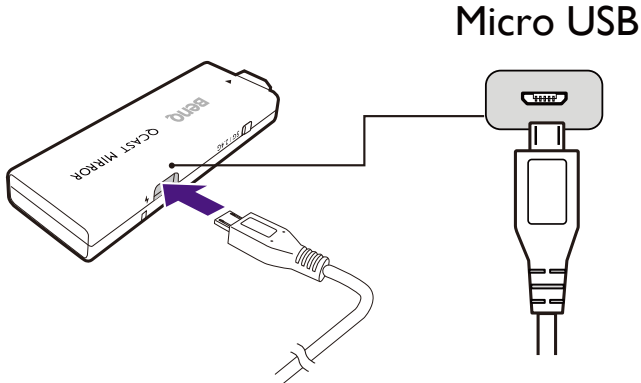
# Operating Instructions

## Connecting the dongle to your projector

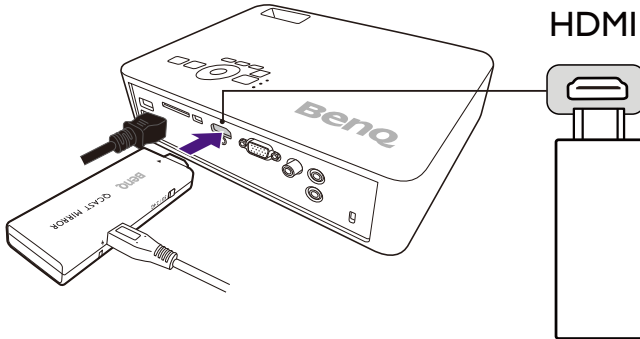


Depending on your device's operating system, different installation procedures and setup are required. Read this document and on-screen instructions (if provided) carefully.

1. Connect the Micro-USB cable to the Micro-USB port on the dongle.



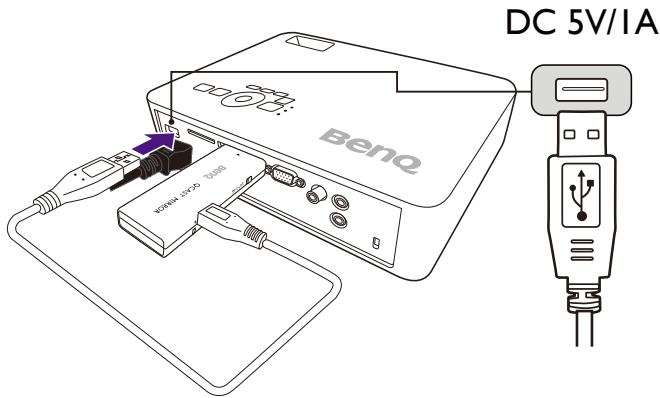
2. Plug the dongle into the HDMI port on the projector.



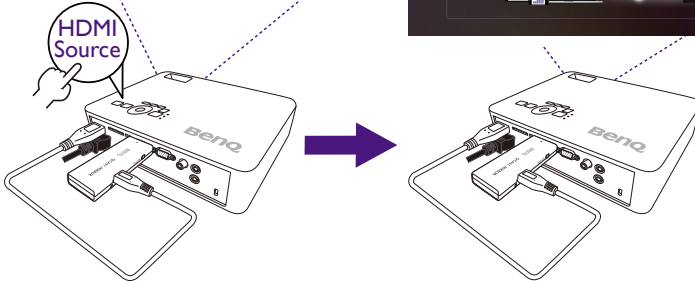
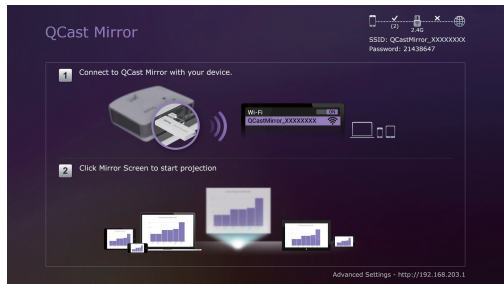
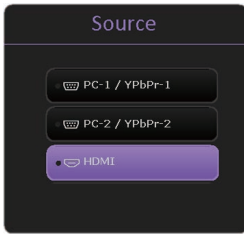
3. Connect the USB type-A connector of the Micro-USB cable to the USB port on the projector, the LED indicator on the dongle will light up blue.



The USB port on the projector that you connect the cable to must provide 5V/1A power. If the LED indicator on the dongle does not light up blue, the USB port on your projector may not supply enough power and you may need to connect the cable to a power socket via a standard USB power adapter.



4. Switch the input source on the projector to HDMI, a standby screen may appear. Once the QCast Mirror screen is shown you can begin the mirroring process.



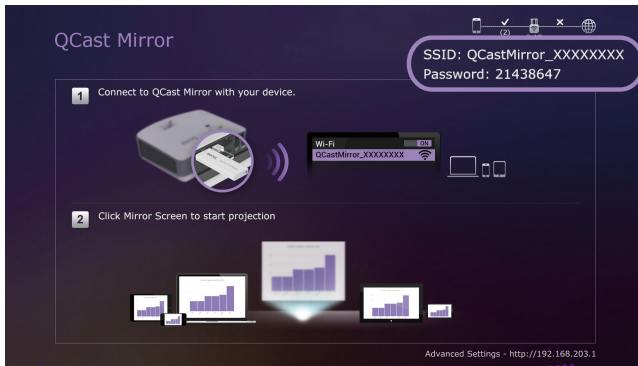
# Mirroring the content from your device

The QCast Mirror allows you to mirror the screen of smartphones, tablets, and computers via a Wi-Fi signal. Devices that do not have Wi-Fi capabilities are not able to mirror their screen via the QCast Mirror. The steps to begin mirroring are described below.

## For Smartphones/Tablets (iOS/Android)

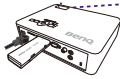
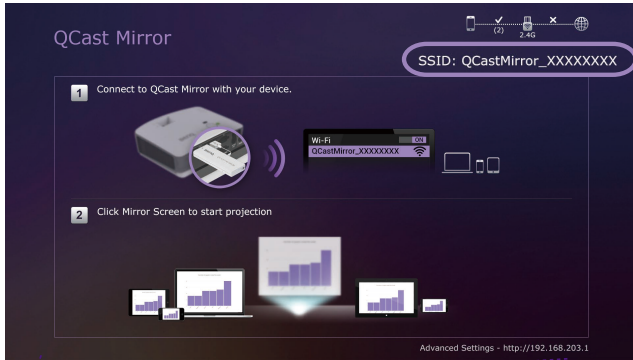
### • iOS

1. Open your iOS device's Wi-Fi menu and connect to the SSID displayed on the top right side of the QCast Mirror screen.
2. Enter the security password displayed below the SSID on the QCast Mirror screen.
3. Tap the iOS screen mirroring button in the iOS **Control Center** menu.
4. Select the QCast Mirror from the list of available mirroring devices.

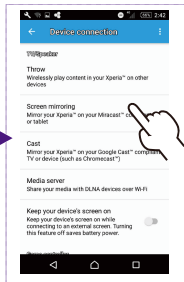
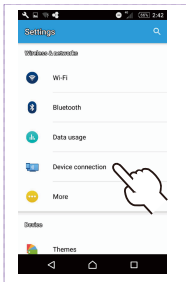


• Android

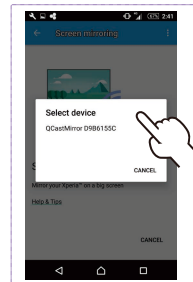
1. Open your Android device's **Screen Mirroring** menu.
2. Select the QCast Mirror from the list of available mirroring devices.



1



2

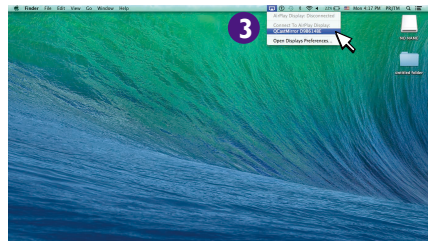
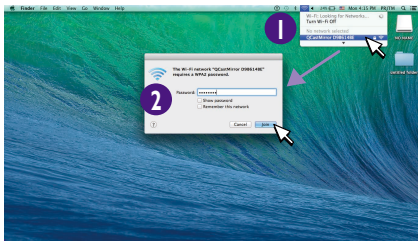
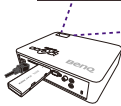
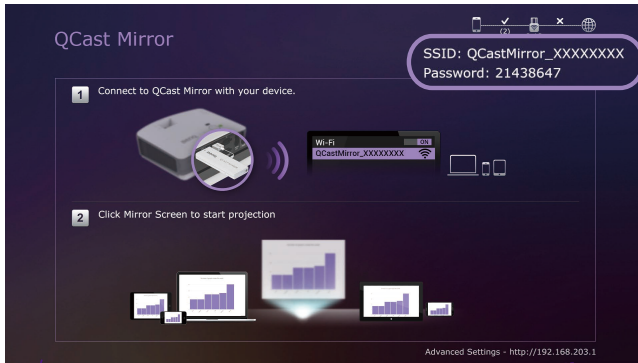




# For Desktop/Laptop Computers

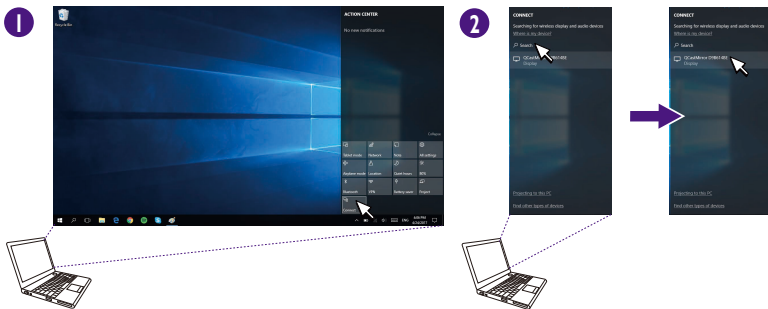
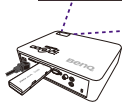
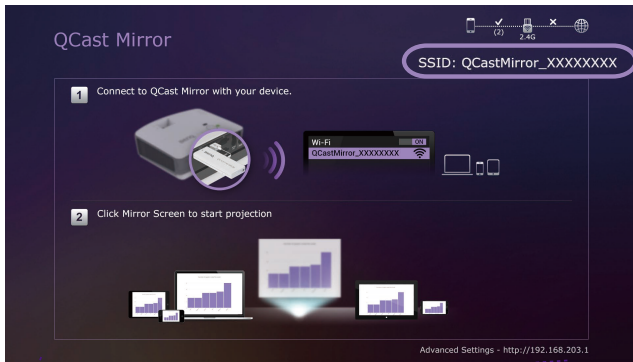
- Mac OS

1. Enter your Mac's Wi-Fi menu and connect to the SSID displayed on the top right side of the QCast Mirror screen.
2. Enter the security password displayed below the SSID on the QCast Mirror screen.
3. Open the Mac screen mirroring menu in the Mac OS home screen, and then select the QCast Mirror from the list of available mirroring devices.



- Windows OS

1. Select the **Connect** button from **Windows Action Center**.
2. Select the QCast Mirror from the list of available mirroring devices.



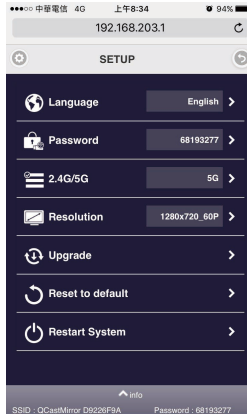
# Advanced Settings



Use a smartphone / tablet to configure settings.

The **Advanced Settings** menu for the QCast Mirror allows you to configure various settings for the QCast Mirror. To access the **Advanced Settings** menu:

1. Enter your device's Wi-Fi menu and connect to the SSID displayed on the top right side of the QCast Mirror screen.
2. Enter the security password displayed below the SSID on the QCast Mirror screen.
3. Open a web browser on your device and enter the URL <http://192.168.203.1>, the **Advanced Settings** menu will open in the browser.



The following items are configurable in the **Advanced Settings** menu:

- **Language:** Sets the language for the **Advanced Settings** page.
- **Password:** Changes the Wi-Fi password for the dongle.
- **2.4G/5G:** Toggles between a 2.4G or 5G Wi-Fi signal.
- **Resolution:** Sets the output resolution.
- **Upgrade:** Updates to the latest firmware.



Your device must be connected to the internet in order to upgrade the dongle's firmware.



- **Reset to default:** Returns all dongle's settings to the preset factory values.

Before leaving the **Advanced Settings** page, select **Restart System** to reboot the QCast Mirror, and then close the **Advanced Settings** page. After that, establish the connection again for screen mirroring.

# Product Specifications

Model Name	QP20 - QCast Mirror HDMI Wireless Dongle	
Dimensions	84 x 11 x 32 mm (W x H x D)	
Input Terminals	Micro USB	
Output Terminals	HDMI 1.2	
Weight	30g approx.	
Wireless Standard	IEEE 802.11a/b/g/n/ac	
Security	WPA/WPA2	
LED	Blue LED indication for Power and WiFi status	
Output Resolution	1280x720 @60hz	1920x1080 @24hz
	1920x1080 @30hz	
Frequency Band	2.4G/5G (default setting)	
Color	White	
CPU	AM8252	
DRAM	DDR3 128MB	
NAND	128MB	
Power	DC 5V/1A, through Micro USB port	
Video support	Max. 1080p@30p video decode	

# System Requirements

PC	Windows OS	Windows 8.1 and above with Miracast support  Mirror Screen support depends on Wi-Fi module and graphics chipset.
	Mac OS	Mac OS X 10.11 and above with Mirror Screen support  Recommended Models: Mac Book series and iMac series after E/2015.
Tablet/Smartphone	iOS	iOS 9.3 and later with Mirror Screen support
	Android	Android 4 above with Mirror Screen support
	Windows Phone	Windows Phone 8.1 and later with Mirror Screen support



- Make sure your device has been upgraded to a proper OS version that supports screen mirroring.
- 5G Wi-Fi only supports Band 1 (5.150 - 5.250 GHz).  
Transmission quality depends on the Wi-Fi environment and the screen mirroring compatibility of mobile devices from different brands. To ensure the best transmission quality, visit <http://www.benq.com/> for the list of compatible devices.
- For further information, please visit: <http://www.benq.com/>

# FAQ

? Is my device able to use QCast Mirror?

✓ Any device with screen mirroring capabilities is able to use QCast Mirror.

? How can I tell if my device has screen mirroring capabilities?

✓ For smartphones/tablets:

Check to see if the operating system for your device matches the system requirements for QCast Mirror, see [“System Requirements” on page 12](#) for more details.

For PCs:

Use the following methods to check to see if your PC is capable of screen mirroring:

1. Check to see if the version of your PC's operating system matches the versions listed in [“System Requirements” on page 12](#). If you are using a PC with Windows 8.1 or above continue with the steps below:
2. Swipe-in from the right edge of the screen or press Windows+P, and then tap **Devices**. Tap or click **Project**. If you see **Add a wireless display**, your PC supports screen mirroring.
3. Get the current drivers for your PC.
  - Make sure Windows Update has installed all of the important and optional updates for your PC.
  - Check the Support page on your PC manufacturer's website and install the drivers for your PC located on the page.
4. If your PC matches all the software requirements for QCast Mirror and you are still unable to mirror your PC's screen, you can check the hardware specifications from the manufacturer for your PC to see if the following specification categories matches the hardware requirements for screen mirroring:
  - Graphics
  - Chipset
  - Wi-Fi adapter
  - Graphics Driver

? Am I able to connect to the internet when I am screen mirroring.

✓ Yes, your device is able to connect to the internet while screen mirroring via an already established (Wi-Fi router or mobile broadband 3G/4G) internet connection. Devices running the Android platform supports Wi-Fi router or mobile broadband 3G/4G internet connections when screen mirroring; devices running the iOS platform only supports mobile broadband 3G/4G internet connection when screen mirroring.

? How many devices can connect to the QCast Mirror simultaneously? Can more than one device mirror their screen at the same time?

✓ Up to 10 devices can be connected to the QCast Mirror simultaneously, but only one device can mirror its screen at a time. The device mirroring its screen must disconnect before another device can mirror its screen.

? How do I switch between 2.4G and 5G Wi-Fi frequency?

- ✓ You can switch Wi-Fi frequency in two ways:
- Press the 2.4G/5G Wi-Fi switcher button located on the dongle.
  - Enter the **Advanced Settings** menu of the dongle and change the **2.4G/5G** field to your desired frequency, and then restart the device. See [“Advanced Settings” on page 11](#) for details on the **Advanced Settings** menu.

? How do I restore the QCast Mirror to its original factory settings?

- ✓ You can restore the QCast Mirror to its original factory settings in two ways:
- Press and hold the 2.4G/5G Wi-Fi switcher button located on the dongle for 10 seconds then release the button. The QCast Mirror will restart with all the user-defined settings deleted.
  - Enter the **Advanced Settings** menu of the dongle and select the **Reset to default** button, and then restart the device. See [“Advanced Settings” on page 11](#) for details on the **Advanced Settings** menu.


? How do I reboot the QCast Mirror?

- ✓ If your QCast Mirror has frozen or you have changed the configurations in the **Advanced Settings** menu you will need to reboot your dongle using any one of the following methods:
- Re-connect the QCast Mirror's Micro-USB cable to the power source.
  - Select the Restart System button in the **Advanced Settings** menu.
  - With BenQ Wireless Projectors (M6 series), press the Menu key and enter the advanced OSD and set the USB power switch to Off and then On. Visit [www.BenQ.com](http://www.BenQ.com) for compatible projector models.

? What do I do if videos shown via QCast Mirror lag or are choppy?

- ✓ When videos shown via QCast Mirror lag or are choppy, the most likely factors are Wi-Fi signal strength or the video bitrate:
- For videos located locally on the mirrored device: The most likely factor is the video's bitrate.
  - For online videos: The most likely factor is the QCast Mirror's Wi-Fi signal is not strong enough, it is suggested that the dongle be placed in an ideal location in terms of Wi-Fi signal strength.

---

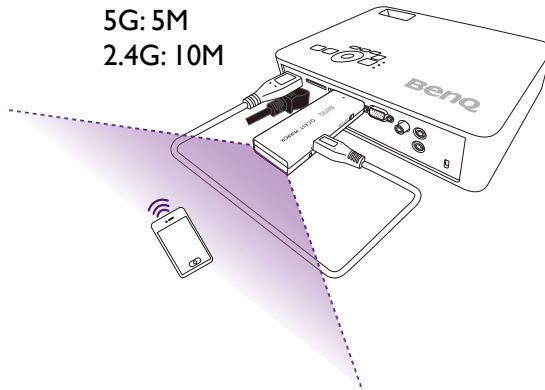
 Transmission quality depends on the Wi-Fi environment and the screen mirroring compatibility of mobile devices from different brands.

---

? What is the ideal location for Wi-Fi signal strength?

✓ The maximum effective range of connection between the mirrored mobile device and the QCast Mirror is 10 meters (for 2.4G Wi-Fi signal) or 5 meters (for 5G Wi-Fi signal) without any obstacles or radio interference.

It is suggested that the mobile device be located behind the dongle within the effective range. And make sure there is no wall or objects obstructing the signal between the connected devices.



? How do I update the QCast Mirror to the latest firmware OTA (Over-The-Air)?

1. Connect to the QCast Mirror's SSID/Password from your mobile device.
2. Open the mobile device's web browser and open the URL <http://192.168.203.1> to view the **Advanced Settings** menu.
3. If the **Upgrade** field shows "New Version!", select **Upgrade**.
4. Select the Wi-Fi router you want the dongle to connect to in order to download the upgrade files.
5. Wait for the confirmation of the upgrade process.

## SAR information for radio equipment in France

EN

2020-03-18 Guide Réglementation DASVf Decree 2019-1186 of 15 November 2019 relating to the display of the specific absorption rate of radioelectric equipment.  
The minimum distance between the user and/or any bystander and the radiating structure of the transmitter is 20cm.

FR

18-03-2020 Guide Réglementation DASVf Décret 2019-1186 du 15 novembre 2019 relatif à l'affichage du débit d'absorption spécifique des appareils radioélectriques.  
La distance minimale entre l'utilisateur et/ou tout spectateur et la structure rayonnante de l'émetteur est de 20 cm.

ES

Normativa "2020-03-18 Guide Réglementation DAS" y Decreto 2019-1186 del 15 de noviembre de 2019 en relación con la tasa de absorción específica del equipo radioeléctrico.  
La distancia mínima la estructura radiante del transmisor y el usuario y/o cualquier transeúnte es de 20 cm.

PT

2020-03-18 Guide Réglementation DASVf Decreto 2019-1186 de 15 Novembro 2019 relativo a exibição da taxa de absorção específica de equipamento eléctrico rádio.  
A distância mínima entre o utilizador e/ou qualquer transeunte e a estrutura irradiante do transmissor é de 20cm.

IT

2020-03-18 Guide Réglementation DASVf Decree 2019-1186 del 15 novembre 2019 relativo alla visualizzazione del tasso di assorbimento specifico delle apparecchiature radio elettriche.  
La distanza minima tra l'utente e/o lo spettatore e la struttura radiante del trasmettitore è 20cm.

DE

2020-03-18 Guide Réglementation DASVf Dekret 2019-1186 vom 15. November 2019 über die Anzeige der spezifischen Absorptionsrate von funkelektrischen Geräten.  
Der Mindestabstand zwischen dem Benutzer und/oder einem Unbeteiligten und der abstrahlenden Struktur des Senders beträgt 20 cm.

RU

Регламент Guide Réglementation DAS Vf от 2020-03-18, Директива 2019-1186 от 15 ноября 2019 г., требующие указывать удельную поглощенную мощность (SAR) электрического и радиооборудования.  
Минимальное расстояние между пользователем и/или любым стоящим рядом с ним человеком и излучающим модулем передатчика составляет 20 см.

PL

2020-03-18 Przepisy Guide Réglementation DASVf Decree 2019-1186 z 15 listopada 2019 r odnoszące się do wskazania właściwego współczynnika pochłaniania dla sprzętu radioelektrycznego.  
Minimalna odległość między użytkownikiem i/lub osobą postronną a konstrukcją promieniującą nadajnika wynosi 20 cm.

TR

2020-03-18 Kilavuzu Telsiz elektrikli cihazların özgül soğurma oranının gösterilmesine ilişkin 15 Kasım 2019 tarihli ve 2019-1186 numaralı DAS Vf Kararı.  
Kullanıcı ve/veya herhangi bir seyirci ile vericinin yayılan yapısı arasındaki minimum asgari 20 cm'dir.

DA

2020-03-18 Guide Réglementation DASVf Decree 2019-1186 fra 15 November 2019, der omhandler visning af specifik absorptionsastighed for radioelektrisk udstyr.  
Minimumsafstanden mellem brugeren og/eller en nærtstående person og den udstrålende enhed/sender er 20 cm.

FI

2020-03-18 Guide Réglementation DASVf asetus 2019-1186, annettu 15. marraskuuta 2019 liittyen radioelektronisten laitteiden SAR-arvon merkintään.  
Käyttäjän ja/tai sivustakatsojan sekä säteilevän lähettimen välisen minimietäisyyden on 20 cm.

NB

2020-03-18 Guide Réglementation DASVf-dekret 2019-1186 av 15. november 2019 knyttet til visning av den spesifikke absorpsjonsraten til radioelektrisk utstyr.  
Minimumsavstanden mellom brukeren og/eller personer i nærheten og senderens utstrålende struktur er 20 cm.

SV

2020-03-18 Guide Réglementation DASVf, dekret 2019-1186 från 15 november 2019 angående visning av specifik absorptionsnivå för radioelektrisk utrustning.  
Minsta säkerhetsavstånd mellan användaren och/eller varje åskådare och sändarens utstrålade struktur är 20 cm.



RO

2020-03-18 Ghid de reglementare DAS Vf Decret 2019-1186 din 15 noiembrie 2019 referitor la afișarea ratei de absorbție specifice pentru echipamentele radio electrice.

Distanța minimă între utilizator și/sau orice trecător și structura radiantă a transmțătorului este de 20 de cm.

CS

2020-03-18 Guide Réglementation DAS Vf Decree 2019-1186 z 15. listopadu 2019 o zobrazení specifické míry absorpce rádiových elektrických zařízení.

Minimální vzdálenost mezi uživatelem a/nebo jakýmkoli kolemjdoucím a vyzařující strukturou vysílače je 20 cm.

NL

18-03-2020 Guide Réglementation DAS Vf Decree 2019-1186 van 15 november 2019 betreffende de weergave van de specifieke absorptieverhouding van elektrische radioapparatuur.

De minimale afstand tussen de gebruiker en/of een omstander en de uitstralende structuur van de zender is 20 cm.

HU

2020-03-18 A DAS Vf irányelvi szabályozás, 2019. november 15-i 2019-1186-os rendelet a rádióelektromos berendezések speciális elnyelési arányának jelzésével kapcsolatban.

A minimális távolság a felhasználó és/vagy járókelők és a jeladó sugárzó szerkezete között 20 cm.

BG

18.03.2020 г. Guide Réglementation DAS Vf Постановление 2019-1186 от 15 ноември 2019 г. относно показването на процент на специфична абсорбция на електрическо радиооборудване.

Минималното разстояние между потребителя и/или евентуален наблюдател и излъчващата структура на предавателя е 20 cm.

HR

2020-03-18 Guide Réglementation DAS Vf Decree 2019-1186 od 15. studenog 2019. u svezi prikaza specifične stope apsorcije električne radio opreme.

Minimalna razdaljina između korisnika i / ili promatrača i dijela predajnika koji zrači je 20 cm.

EL

2020-03-18 Guide Réglementation DAS Vf Διάταγμα 2019-1186 με ημερομηνία 15 Νοεμβρίου 2019 που σχετίζεται με την ένδειξη του ειδικού ρυθμού απορρόφησης ραδιοηλεκτρικού εξοπλισμού.

Η ελάχιστη απόσταση μεταξύ χρήστη ή/και άλλου παρευρισκομένου και του στοιχείου ακτινοβολίας του πομπού είναι 20 cm.

**BenQ.com**

© 2020 BenQ Corporation  
All rights reserved. Rights of modification reserved.

6/15/2020