



# MANUAL PULL DOWN SCREENS WITH RETURN CONTROLLER



The new synthetic glass fibre base fabric is used to replace the traditional white plastic knitted base fabric. In terms of imaging, the glass fibre is used as the bottom layer, and the high-tech PVC surface coating is used for a better picture.

Case material: piano lacquer curved shell

Available sizes and ratios: 16:9 106 inches, 16:10 92-133inches; 4:3 84-150 inches, 1:1 60-70 inches

Applicable environment: business office, cost-effective first choice

Applicable places: high-end business and educational places.

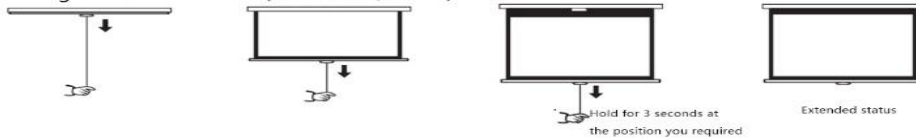
Applicable projectors: all common projectors

(not applicable to ultra-short-throw projectors)

# Technical Specifications

Format	Diag. Size (inch)	Viewing area W x H (mm)	Case Length (mm)	Total Height (mm)	Black Drop (mm)	Packing Size (mm) LxWxH	Gross Weight (kg)	Manu Model #	Soltech Code
16:10	106"	2280 x 1425	2515	1900	450	2630 x 175 x 130	12.5	JK-M10 106SC	M10106SC
	119"	2560 x 1600	2800	1960	300	2920 x 175 x 130	14	JK-M10 119SC	M10119SC
	133"	2860 x 1790	3130	2010	150	3250 x 190 x 145	24	JK-M10 133SC	M10133SC
4:3	84"	1710 x 1280	1880	1520	60	1975 x 175 x 130	10.5	JK-M4 84SC	M484SC
	100"	2030 x 1520	2200	1760	60	2315 x 175 x 130	11.5	JK-M4 100SC	M4100SC
	120"	2440 x 1830	2610	2070	60	2725 x 175 x 130	13	JK-M4 120SC	M4120SC
	150"	3050 x 2285	3230	2585	100	3550 x 190 x 145	26.5	JK-M4 150SC	M4150SC

一、 Extending screen: pull down by handle and hold for 3 seconds at the position you required, and then let go. Screen is locked (accurate +/-2mm).

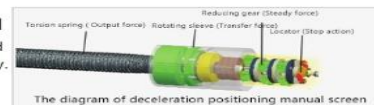


二、 Retracting screen: pull down slightly and let go, screen will retract into case in even speed.



### CSR is optional

JK's unique CSR device enables precise limit setting and helps the screen to retract slowly and safely.



### JHB

011-789 9549  
brite@soltech.co.za  
www.soltech.co.za

### CPT

021-683-0377  
capsol@soltech.co.za

**SOLUTION<sup>®</sup>**  
**TECHNOLOGIES**



SPECIALIST AUDIOVISUAL DISTRIBUTOR