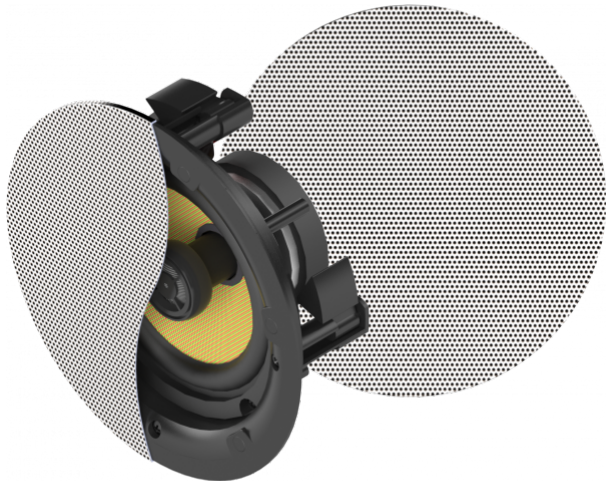


Slim bezel-less magnetic grille  
Premium fiberglass woven 6.5" Woofer  
Large 0.75" Silk Tweeter  
Passive Crossover



Redesigned from the ground up, the CS-1900 ceiling speakers are loaded with quality components resulting in clean, powerful sound. They use the ceiling void as an infinite baffle – allowing un-restricted driver excursion – all of which adds up more bass. Low impedance speakers like these offer better sound than 100/70v line speakers. Perfect for meeting spaces.

### Woven fiberglass

Woven fiberglass gives smooth audio with incredible detail and transparency. The cone is held in place with a butyl rubber surround to extend the life of the loudspeaker.

### Silk Dome

The large tweeter is made from premium material and pivots to help installers setup the soundscape. Silk ensures long, stable performance and reduces distortion.

### Magnetic Grill

The grill clips into place magnetically once the speakers are secured.

### Invisible

The grill extends all the way to the edge of the speaker resulting in virtually no visible edge. This ultra thin grille allows the technology to visually disappear.

### Simple to fit

A cutout template is included so the installer can easily trace the cut line in the ceiling tile. Cut a 205 mm hole and turn the dog-leg screws from below to fix the speaker; it's quick and easy.

### Shallow

Only 95 mm deep, the CS-1900 can be placed anywhere around the room to optimally disperse the sound. They fit in any environment which has a false ceiling.

### Crossover

Gold plated terminals and a quality crossover circuit is included which splits the work between the woofer and tweeter.

### High Sensitivity

Ceiling speakers often lack the power of wall speakers, but these have a higher sensitivity of 87dB to cut through high-noise presentation environments.

### Thick Ceiling?

The clamps are an extra long 26 mm to cope with ceilings made of very thick material. Most ceiling speakers can only cope with tiles up to 15 mm thick.

## SPECIFICATIONS

**LOUDSPEAKER DIMENSIONS**

225 x 95 mm

**CUTOUT SIZE**

205 mm

**CARTON DIMENSIONS**

280 x 245 x 280 mm (contains a pair)

**SPEAKER WEIGHT**

1.4 kg (each)

**CARTON WEIGHT**

3 kg (contains a pair)

**POWER HANDLING**

60 Watt RMS

**WOOFER**

6.5" Woven fiberglass

**TWEETER**

0.75" Silk Dome

**CONSTRUCTION MATERIAL**

ABS Plastic

**SPEAKER TERMINALS**

Spring post

**NOMINAL IMPEDANCE**

8 ohms

**SENSITIVITY**

87 dB (1w/1m)

**FREQUENCY RESPONSE**

60Hz-20kHz

**COLOUR**

Cone: Yellow Basket: Black Grill: White

**WARRANTY**

Lifetime return-to-base

**COMPLIANCES**

RoHS, WEEE, REACH, UKCA